

Lake Whatcom – Floathaven Seaplane Base Splash In

When: Sunday, 16 August 2020 11:00 AM – 3:00PM, PDT

Where: Floathaven Seaplane Base – 0W7, Lake Whatcom, WA

EVENT DETAILS:

The Washington Seaplane Pilots Association is hosting a Pop-Up Splash In at the Floathaven Seaplane Base this coming Sunday, August 16, from 11:00AM - 3:00PM.

The owners of Floathaven have been busy upgrading the facility including a major dock repair. Floathaven is one of four seaplane bases participating in the WSDOT “Fly Washington – Passport Program”. Bring your WSDOT Passport and get the Floathaven stamp!.

This is the first of several pop-up splash-outs planned for the balance of the summer. We hope to see many of you at Lake Whatcom on Sunday.

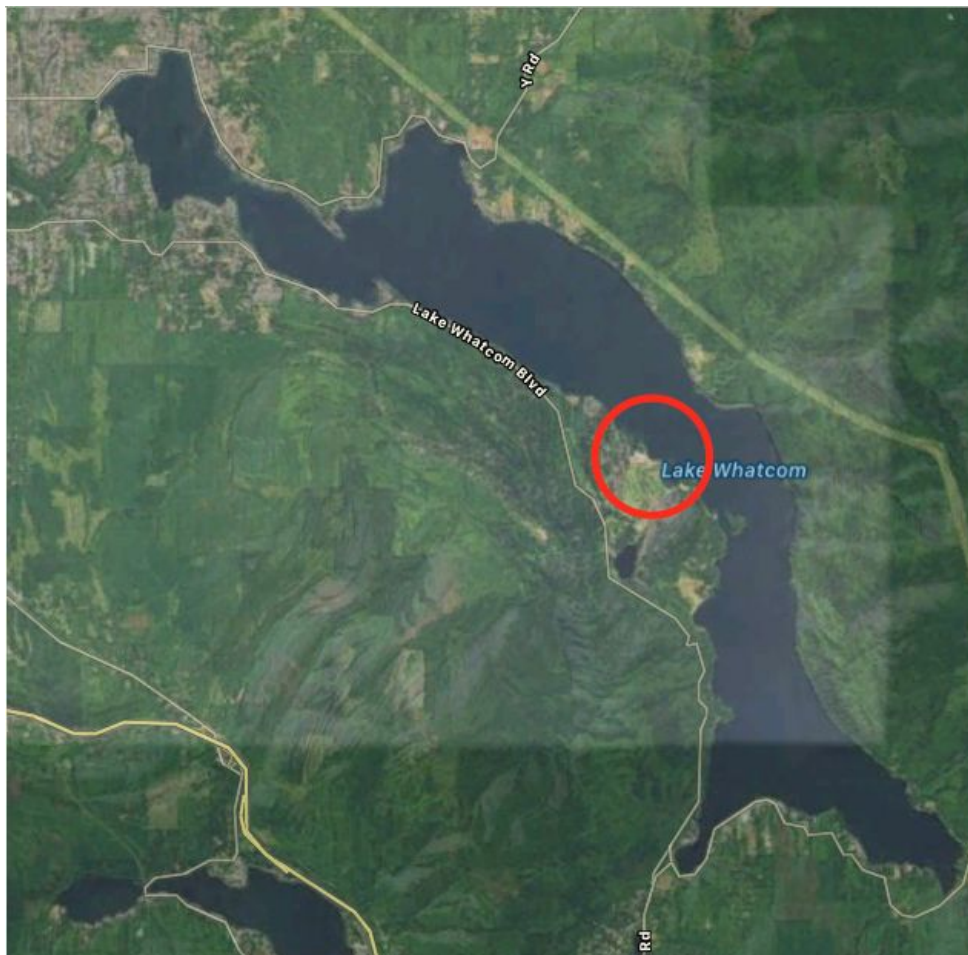
- This is a Bring Your Own Picnic Lunch Event.
- Water and soft drinks provided
- Use 122.90 on approach and departure from Lake Whatcom.
- 122.9 will be monitored on the ground to assist incoming aircraft
- See Goggle Map for docking/beaching locations.
 - Floathaven’s seaplane dock will accommodate 5-6 aircraft
 - Overflow docking just north at Dan Older’s dock. Dan also has several beaching locations and a ramp for flying boats (please coordinate with Don Goodman if you would like to ramp)
- Observe Invasive Species Guidelines below. *Inspect plane before arrival.*
- Fly Quiet. Dial That Prop Back unless you really need all those RPMs.
- Be Safe and Have Fun.
- Observe appropriate social distancing protocols.
- No Registration Required. Just Show up.

There will certainly be lots of good seaplane chatter. Come & Enjoy.

There are lots of other seaplane accessible destinations in the area that you might consider working into your plan for the day. Take a look at our [Destinations Map](#) by clicking [this link](#). Use caution on bodies of water with low water exposing stumps and snags, in particular Baker Lake if you choose to go there.

Questions: contact Don Goodman, 360-303-7076, donaldjg56@gmail.com

See you Sunday!



Lake Whatcom and Lake Samish, Washington - Aquatic Invasive Species Operating Agreement

In January 2015, WSPA and the Lake Whatcom Management Team (administratively led by the City of Bellingham) concluded negotiations on a cooperative agreement

relative to aquatic invasive species (AIS) and seaplane operations on Lakes Whatcom and Samish.

WSPA has created the on-line training course for invasive species that includes seaplane inspection and decontamination: www.SeaplaneAIStraining.com. At the end of the course you can print a certificate to indicate you've completed the course. That certificate qualifies the pilot to inspect his/her own aircraft in the states of WA, ID, MT and OR.





Lake Whatcom - Floathaven 0W7

Write a description for your map.

Legend
★ Feature 1

